

**SANCHO MOTORS OF MIAMI**

2800 NW 5th Ave  
Miami, FL (33127)

# LEMONT

THE NEW VINTAGE STYLE TRAILER





## About LeMont

*LeMont is a marketing tool unrivaled in both its quality and visual impact.*

From hitch to bumper, LeMont Model is constructed from the highest quality materials. Structurally, ISO 9001 Bureau Veritas certifies the entire manufacturing process.

The manufacturer is called Mactrail, and they are the largest Argentine trailer manufacturer. These beauties are developed in Buenos Aires, Argentina and imported by Sancho Motors to the United States.

We have 3 sizes, LeMont 100, LeMont Large and LeMont XL (blueprints below).

All trailers have a VIN number certified by SAE and are able to be registered in any US State.

LeMont is conceived as a trailer since most of the time its stationary. Why add unnecessary costs when it can be hauled with a simple trailer hitch connection.

No engine means no unexpected expenses, no auto insurance or costly relocation fees.

LeMont's striking design and highly functional interior allows for endless applications. From food & beverage, to retail and trade show, your trailer will stand out from the crowd.



***"No Engine. No Worries"***





---

*Inspired by the mythical French Van.*

Building Features:

- Tubular chassis
- Fiberglass monobody
- Service window
- 2" ball coupler system
- American Diamond Plate floors
- 4 pretending tires
- Axle cover box
- Hydraulic Surge Actuator Break Dexter DX7.5
- 750 lbs Max Tongue Load



#### Interior Standard Configuration:

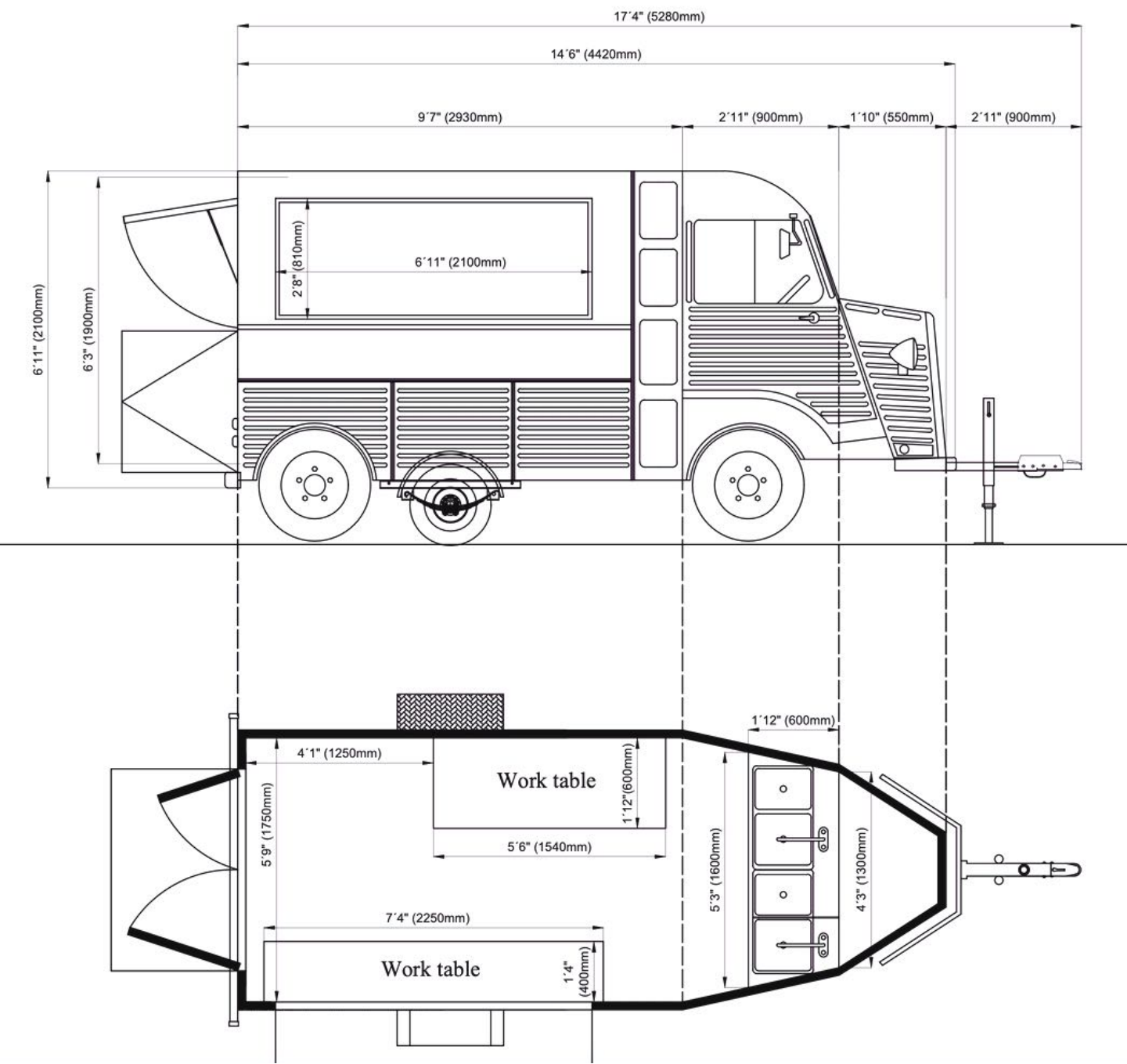
- Interior lined in white fiberglass
- English brick style tiles
- Electrical system
- LED interior lighting
- Double security locks
- Service front and back worktables
- Storage space
- Three stainless steel sinks
- Hand wash sink
- 12v water pump
- 30 gallon fresh water tank
- 35 gallon grey water tank

#### Weight, Load Capacity & GVWR:

- Lemont 100:  
Weight 2640 lbs / Load Capacity 1100 lbs / 3740 GVWR
- Lemont Large:  
Weight 2930 lbs / Load Capacity 660 lbs / 3590 GVWR
- Double axle:  
Weight 3190 lbs / Load Capacity 1650 lbs / 4850 GVWR
- Lemont XL:  
Weight 3630 / Load Capacity 1300 lbs / 4960 GVWR

# LEMONT 100

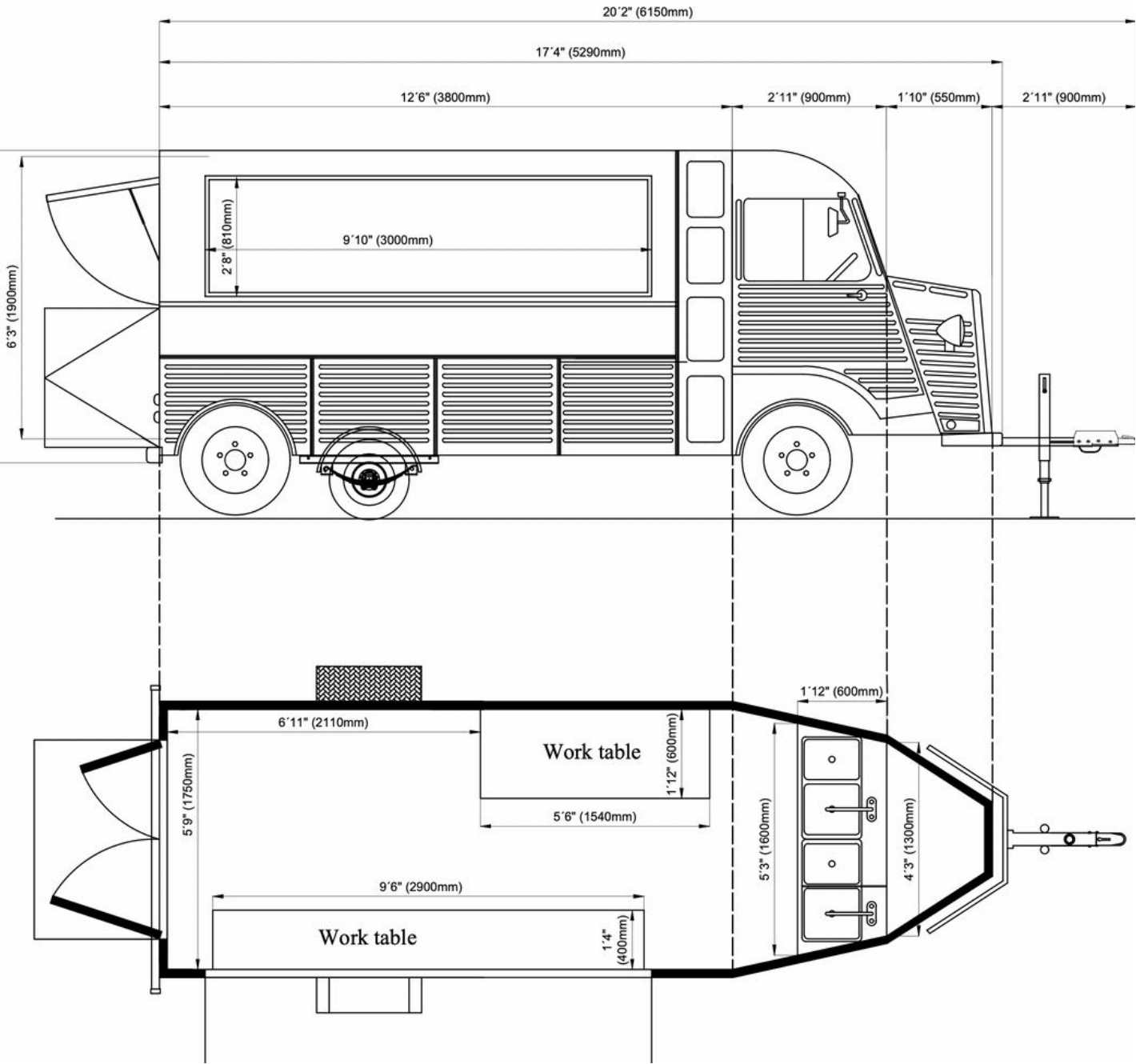
## EXTERIOR & INTERIOR LAYOUTS





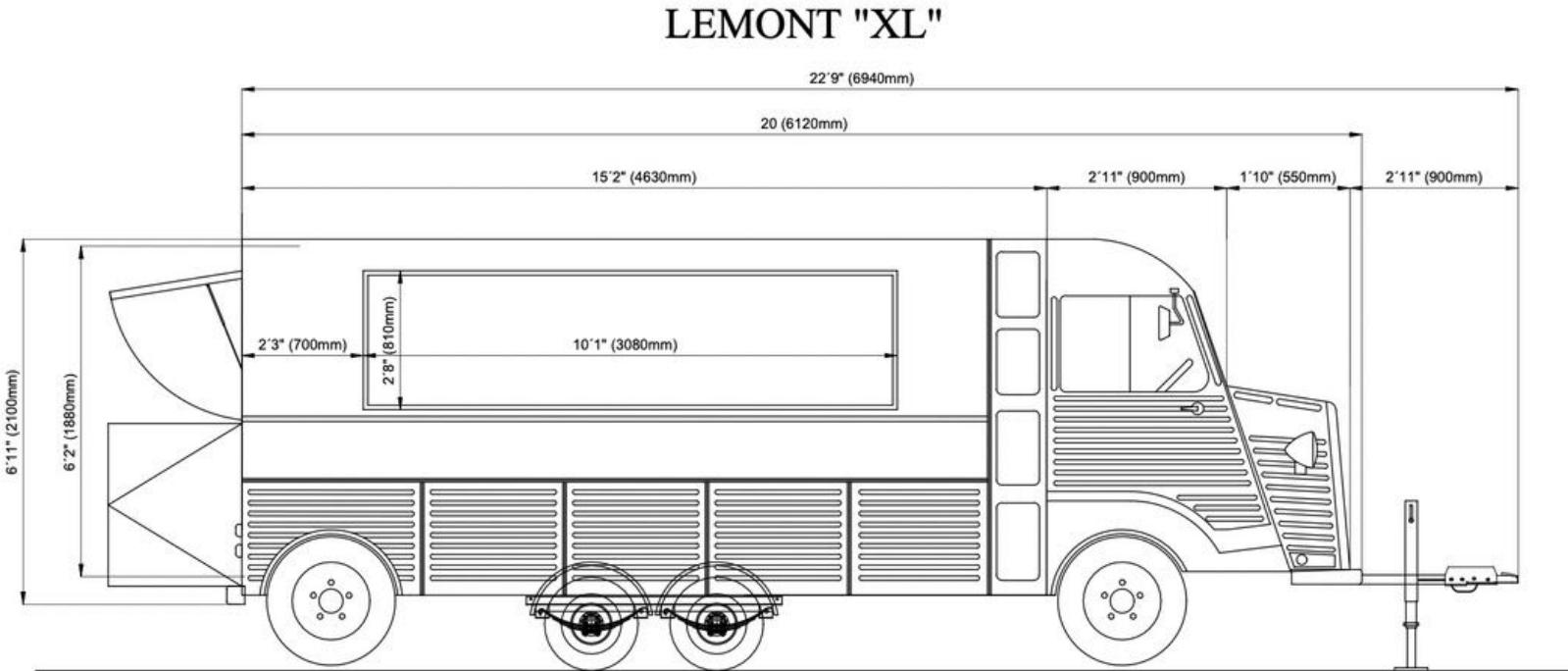
# LEMONT L

## EXTERIOR & INTERIOR LAYOUTS



# LEMONT XL

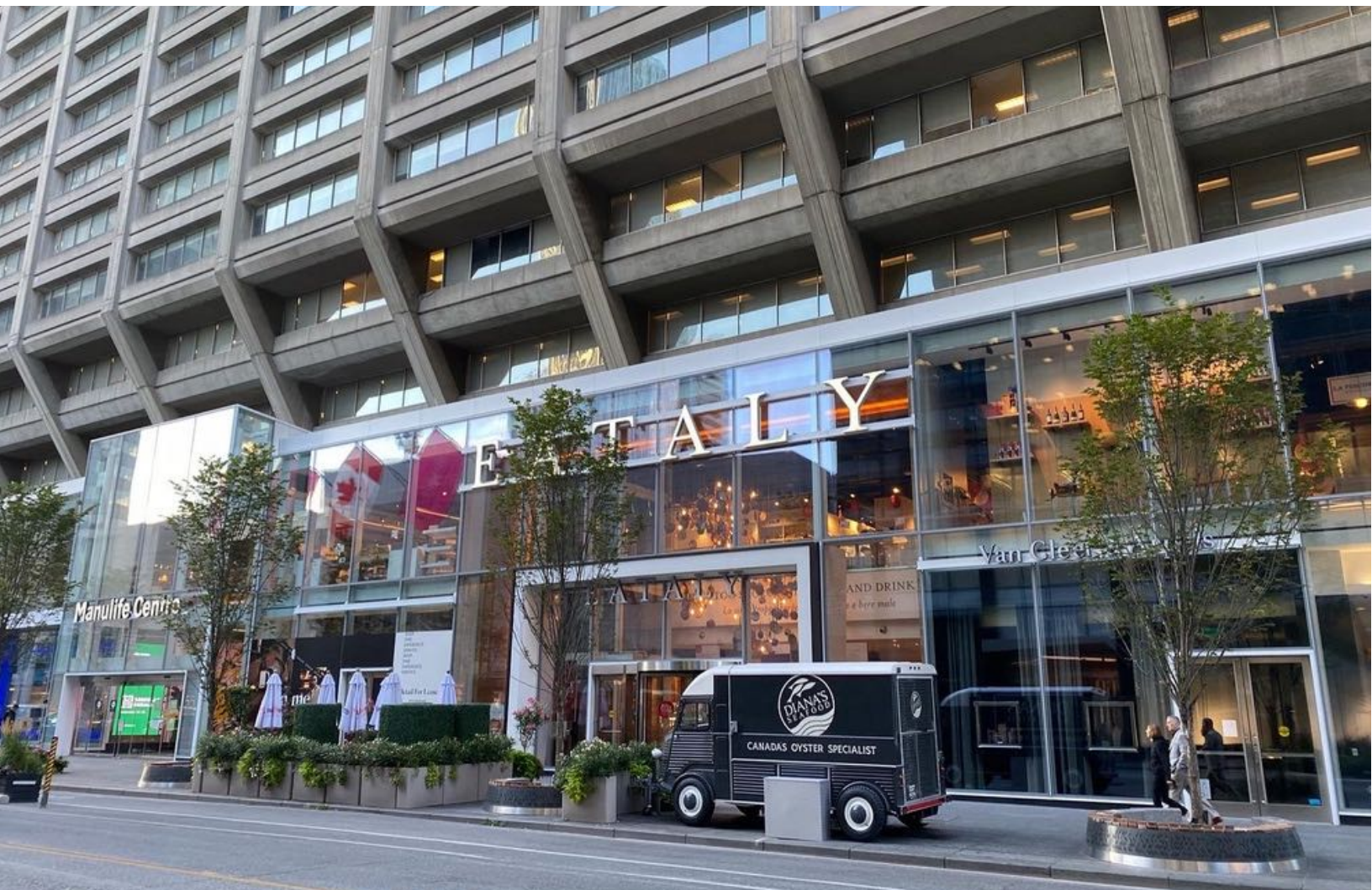
EXTERIOR & INTERIOR LAYOUTS















## GET IN TOUCH

### **MATIAS PELLEGRINI**

Chief Sales Officer

[matias@sanchomotorsofmiami.com](mailto:matias@sanchomotorsofmiami.com)

(786) 558 6631

### **GONZALO SANCHO**

Chief Executive Officer

[gsancho@sanchomotorsofmiami.com](mailto:gsancho@sanchomotorsofmiami.com)

(786) 346 7714

[SANCHOMOTORS.COM](http://SANCHOMOTORS.COM)

2800 NW 5th AVE  
MIAMI, FL (33127)